

INTRODUCTION

In fleet service applications, the Vacuum Holster™ is suspended from a bracket suspension kit, part # A6BHS. This kit consists of:

- One suspension rim, which is bolted to a (contractor supplied) support from structure;
- Three flexible suspension straps, which connect the Hose Holster storage cylinder to the suspension rim;
- One 6" hose clamp to connect the exhaust hose of the Vacuum Holster™ to the exhaust duct.

NOTE: Ascent Systems does not include exhaust duct, angle iron, uni-strut, roof curbs, wall brackets, or any other such supplies as part of the bracket suspension kit.

It is recommended that the Vacuum Holster™ be suspended so that the lower rim of the tailpipe adapter is 6'6" AFF. With this height, the system is easily within reach of personnel, but it is high enough not to present an encumbrance within the facility.

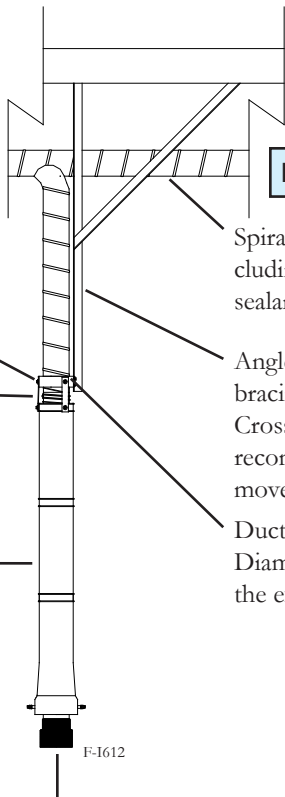
OVERVIEW

Items by Ascent

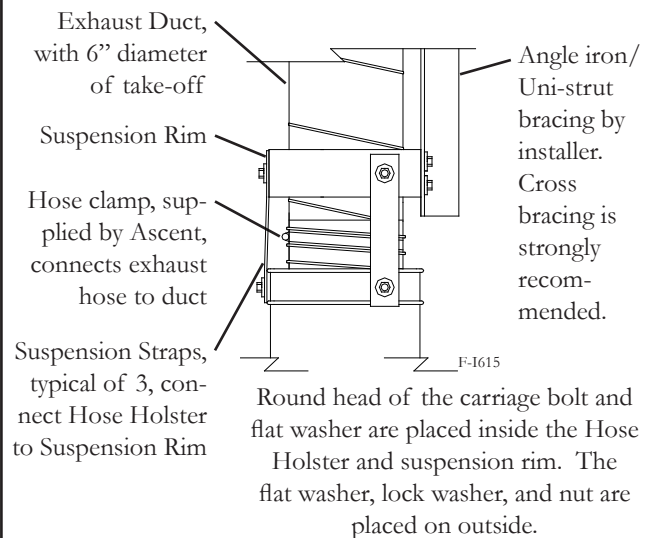
- Suspension rim (hardware provided) attaches to bracing from structure
- Three suspension straps connect Hose Holster to suspension rim. Straps allow Holster to pivot and rotate.
- Vacuum Holster™ with Hose Holster, exhaust hose, and tailpipe adapter with rotational damper.

Items by installer

- Spiral ductwork, including support straps, sealant, and fittings
- Angle iron/Uni-strut bracing from structure. Cross bracing is strongly recommended to reduce movement.
- Duct take-off fitting. Diameter to match that of the exhaust hose.



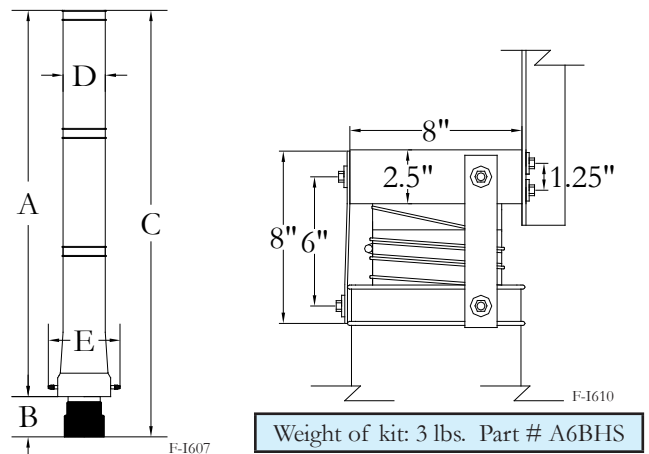
DETAIL



For the extended Holster, hang the top of the suspension rim at 13'8" to attain 6'6" clearance AFF. Field cut the Hose Holster for low ceiling applications, but no more than 22".

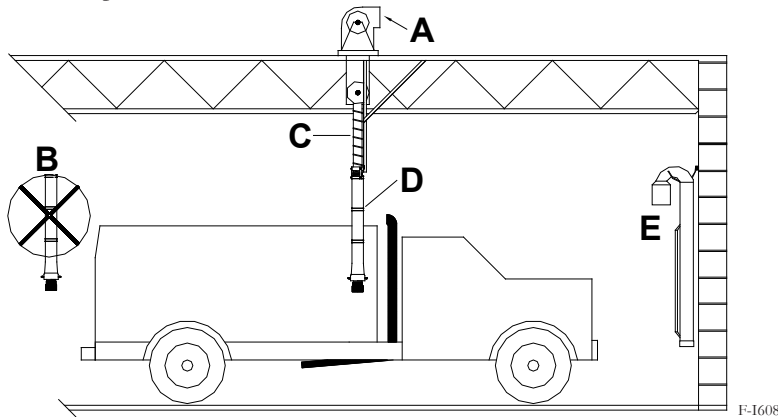
DIMENSIONS AND WEIGHTS

Dimensions & Weights - Vacuum Holster™ Assembly		
Hose Holster Model	6" Compact*	6" Extended
A - Hose Holster Height	50"	72"
B - Tailpipe Adapter below Hose Holster	7 1/2"	7 1/2"
C - Total Height Vacuum Holster™	57 1/2"	79 1/2"
D - Width, Hose Holster Body	7 7/8"	7 7/8"
E - Width, Damper Axle	14"	14"
*Note: For Compact Holsters, A, B, and C are minimums. The installer may field-cut the Holster to a length between the two figures.		
Weight - Vacuum Holster™ w/ 17' Hose	38 lbs.	41 lbs.
Weight - Vacuum Holster™ w/ 20' Hose	41 lbs.	44 lbs.
Weight - Vacuum Holster™ w/ 25' Hose	n/a	49 lbs.



GUIDELINES FOR LOCATION OF 5-6" VACUUM HOLSTERS™, SIDE VIEW

Ascent Systems recommends that fleet service Vacuum Holsters™ generally should be suspended so they are positioned at the midpoint of the service bay, where the vertical stack or undercarriage exhaust is located. However, the designer is encouraged to review the fleet being serviced; some applications, like school buses, may have exhaust pipes at the bumper of the vehicle.

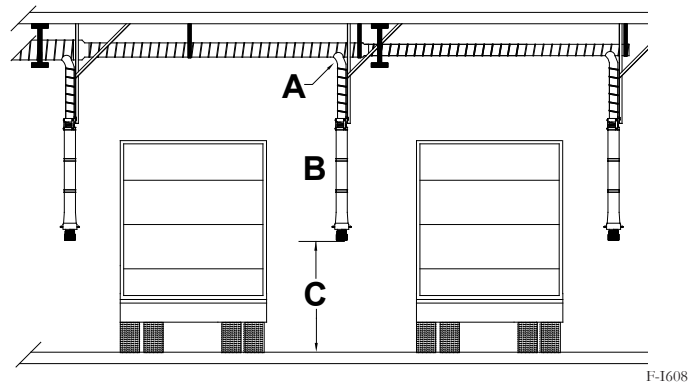


Note:	Comment
A	Outdoor fan placement is strongly recommended.
B	WRONG LOCATION: The Vacuum Holster™ is too far back, potentially creating a coverage issue.
C	Uni-Strut or angle iron bracing from structure by contractor. Cross-bracing is strongly recommended.
D	CORRECT LOCATION: The Vacuum Holster™ hangs just behind the cab, near the undercarriage pipe or vertical stack.
E	Exhaust cane is used for vertical stack connection. The hood is placed over the stack, and the base of the cane attaches to the tailpipe adapter.

GUIDELINES FOR LOCATION OF 5-6" VACUUM HOLSTERS™, END VIEW

Ascent Systems strongly encourages the system designer to locate the Vacuum Holsters™ between the service bays.

Note	Comment
A	Diameter of take-off fitting to match exhaust hose.
B	CORRECT LOCATION: The Vacuum Holsters hang between the service bays.
C	Bottom rim of tailpipe adapter to be 6'6" AFF. Confirm with owner rep. prior to installation.



LOW-CEILING APPLICATIONS

In applications where the suspension rim must be hung below 13'8" AFF, the Hose Holster may be field-cut, as shown at right. To ensure that there is enough room to store the compressed exhaust hose, it is not recommended to cut the Hose Holster more than 22". There should be 6'6" clearance from the floor to the lower rim of the tailpipe adapter.

